

1" Round Button Template

Save in one of the following formats: .ai .eps .pdf
Vector artwork preferred over raster based image.
Minimum resolution at 150dpi, max 600 dpi

1 Position and scale your design into the Artwork layer.



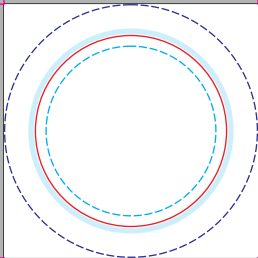
2 Embed all external links and images.



3 Outline or center crop your fonts.

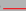


Art canvas area = 1.32" x 1.32"



 **Safe Area** (0.875" Diameter)

Keep Important Text and Graphics inside Dotted Circle

 **Button Face** (1" Diameter)

Button Surface Area Visible Before Outer Edge.

 **Copyright Area**

Any Text in this Area will Appear on the Side of the Button

 **Outer Edge** (1.32" Diameter)

Area that will Wrap Around Button. Cut Line for Artwork.

Bleed Margins

Extend Artwork Bleed to the Corners of the Bleed Registration Marks.

3.25" Square Button Cards Template

Save in one of the following formats: .ai, .eps, .pdf
Vector artwork preferred over raster based image.
Minimum resolution at 150dpi, max 600 dpi.

① Position and scale your design onto the **Artwork layer**.



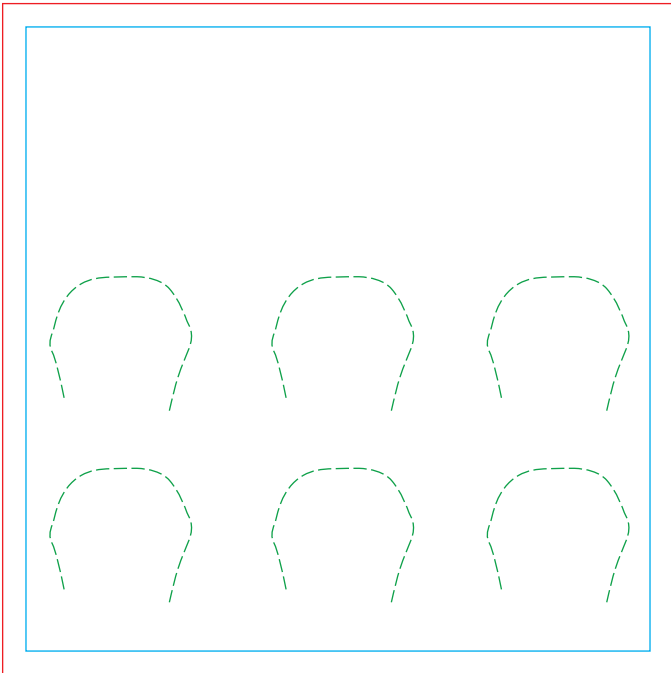
② Embed all external links and images



③ Outline or rasterize your fonts



Art canvas area = 3.75" x 3.75"



Safe Area (3.25" x 3.25")

Keep important Text and Graphics inside Dotted Circle

Die Cut (3.5" x 3.5")

Button Card edge.
Cut line for the Artwork.

Bleed (3.75" x 3.75")

Extend Artwork to the Bleed

Button Placement

Pink back Button placement area

Bleed Margins

Extend Artwork Bleed to the corners of the Bleed Registration Marks.