

1" Round Button Template

Save in one of the following formats: .ai .eps .pdf
Vector artwork preferred over raster based image.
Minimum resolution at 350dpi, max 600 dpi

1 Position and scale your design into the Artwork layer.



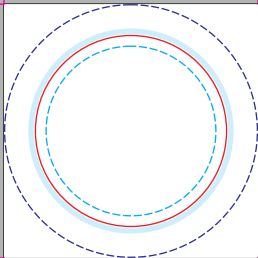
2 Embed all external links and images



3 Outline or rasterize your fonts



Art canvas area = 1.32" x 1.32"



 **Safe Area** (0.875" Diameter)

Keep Important Text and Graphics Inside Dashed Circle

 **Button Face** (1" Diameter)

Button Surface Area/Visible Before Outer Edge.

 **Copyright Area**

Any Text in this Area will Appear on the Side of the Button

 **Outer Edge** (1.32" Diameter)

Area that will Wrap Around Button. Cut Line for artwork.



Bleed Margins

External Artwork Bleed to the Corners of the Bleed Registration Marks.

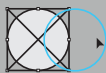
3" x 4" Button Cards Template

Save in one of the following formats: .ai .eps .pdf
Vector artwork preferred over raster based image.
Minimum resolution at 150dpi, max 600 dpi

① Position and scale your design onto the **Artwork** layer.



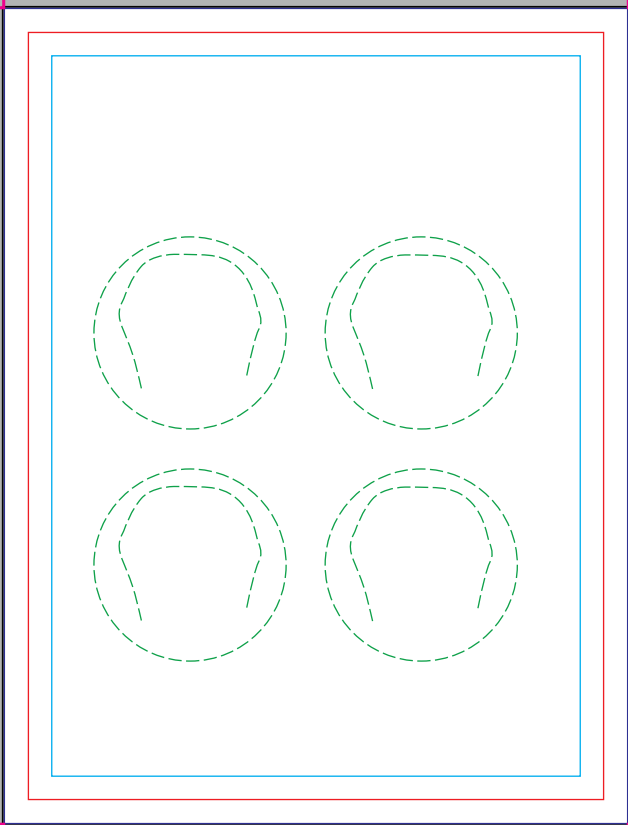
② Embed all external links and images



③ Outline or rasterize your fonts



Art canvas area = 3.25" x 4.25"



Safe Area (2.75" x 3.075")

Keep Important Text and Graphics inside Dotted Circle

Die Cut (3" x 4")

Button Card edge.
Cut line for the Artwork.

Bleed (3.25" x 4.25")

Extend Artwork to the Bleed

Button Placement

Pink back Button placement area

Bleed Margins

Extend Artwork Bleed to the corners of the Bleed Registration Marks.